



**12 AN MALE VACUUM REGULATOR INSTRUCTIONS
STR.03.04.300**

THEORY

Locating the vacuum regulator outside of the crankcase area and placing it directly onto the vacuum pump is the ideal position. The regulator creates a controlled leak to limit the amount of vacuum. When such a leak is placed inside the crankcase area it promotes oil to be scavenged from the engine. The pump-mounted regulator not only reduces this condition but also allows ambient air into the pump as opposed to hotter crankcase air when the set point is reached allowing the pump to run cooler.

INSTALLATION

The Star Machine pump mounted regulator will work on any manufactures pump containing a -12 Female thread. Remove the A/N fitting from the intake port of the vacuum pump and replace it with the Star Machine Regulator. Sealing is insured by the oring provided. The "banjo" containing the regulator valve assembly also seals with internal orings allowing it to float and be rotated 360 degrees for ideal positioning. Connect the hose (containing -12 female hose end) coming from the engine to the regulator.

ADJUSTING THE REGULATOR SET POINT

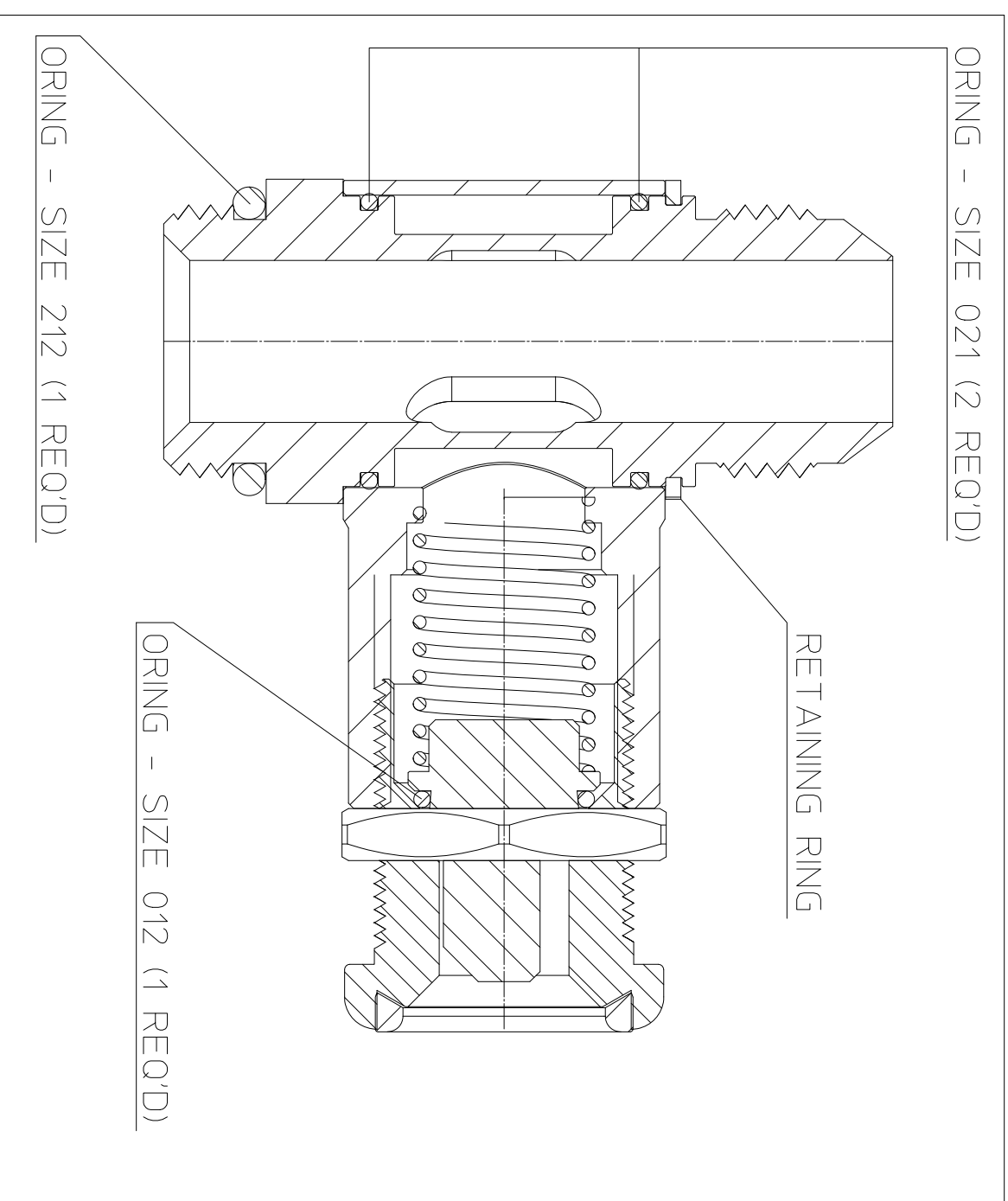
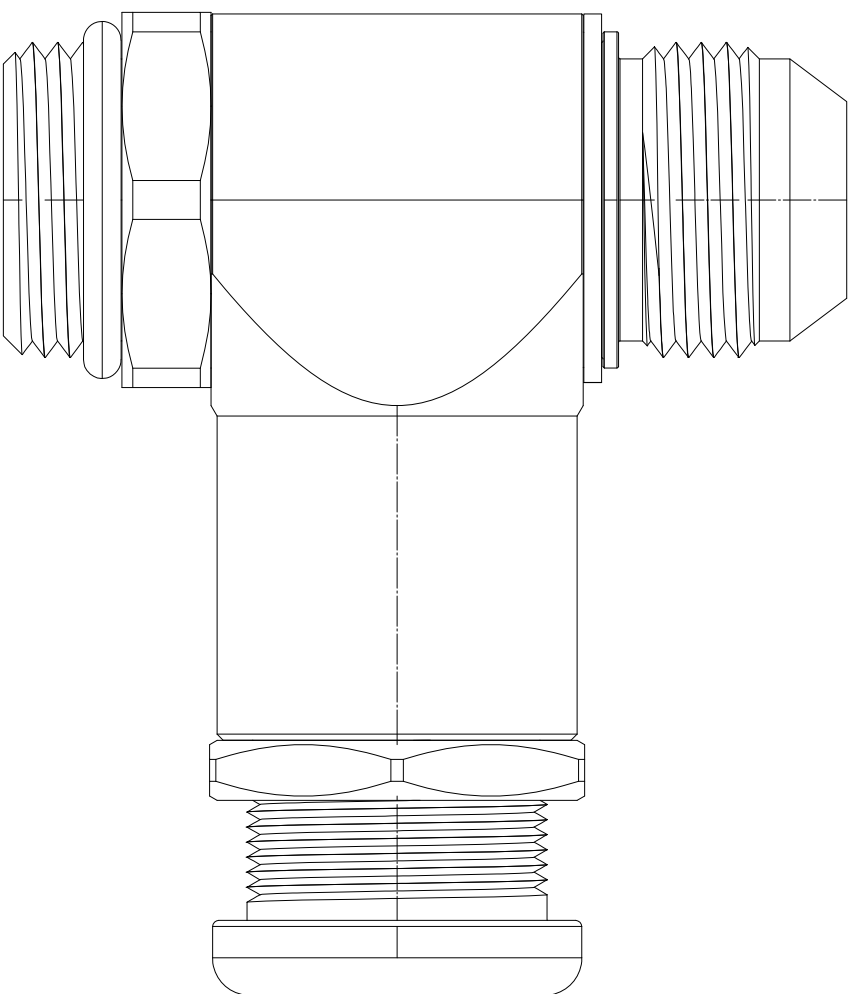
The regulator is filtered, infinitely adjustable, and does not require disassembly to change the set point. To adjust the set point, loosen the 1 ¼" hex jam nut. Increase vacuum by turning the regulator (the portion containing the screen) in (clockwise). Decrease vacuum by turning the regulator out (counterclockwise). Retighten the jam nut.

FOR MORE DETAILED INFORMATION ON ALL OUR PRODUCTS VISIT US AT STARVACUUMPUMPS.COM

STAR MACHINE
7810 OAK AVENUE
PARKVILLE, MARYLAND 21234

PHONE: 667.210.3874
FAX: 410.661.2467
EMAIL: STARVACUUMPUMPS@GMAIL.COM

CUTAWAY



2									
1									
0									
REV.		REVISION DESCRIPTION		DATE					
<p>STAR MACHINE 7810 OAK AVENUE PARKVILLE, MD. 21234</p>		DESCRIPTION	REGULATOR, MALE VACUUM		MATERIAL		DESIGNED BY	T HIGDON	
HEAT TREATING							SCALE	SHEET	SIZE
HARDNESS							1 OF 1	1	B
SURFACE PREPARATION							DRAWING NO.		
FINISH							STR.03.04.300		

TOLERANCES UNLESS SPECIFIED

LINEAR (INCHES)	ANGULAR
0.05--10 ± 0.005	0-90 ± 0.25°
11--20 ± 0.010	91-180 ± 0.50°
21--30 ± 0.015	181-270 ± 0.75°
31--40 ± 0.020	271-360 ± 1.00°
41--50 ± 0.030	
51--100 ± 0.050	

BREAK ALL EDGES UNLESS SPECIFIED

LINEAR (INCHES)	ANGULAR
0.05--10 ± 0.005	0-90 ± 0.25°
11--20 ± 0.010	91-180 ± 0.50°
21--30 ± 0.015	181-270 ± 0.75°
31--40 ± 0.020	271-360 ± 1.00°
41--50 ± 0.030	
51--100 ± 0.050	

THIS DRAWING IS THE PROPERTY OF STAR MACHINE.
 IT SHALL NOT BE DISCLOSED OR COPIED WITHOUT
 THE WRITTEN AUTHORIZATION OF STAR MACHINE.