

PULLEY DIAMETERS	
36T ALUMINUM (SHOWN)	Ø4.45
24T ALUMINUM	Ø3.00
24T COMPOSITE	Ø3.12
36T COMPOSITE	Ø4.53
40T COMPOSITE	Ø5.00

**STAND LENGTH NOTES**  
 THE STANDARD LENGTH IS 2.25"  
 STANDS AVAILABLE IN 0.25" INCREMENTS  
 THE MINIMUM LENGTH IS 1.75"  
 THE MAXIMUM LENGTH IS 3.50"  
 CUSTOM LENGTHS AVAILABLE IF REQUIRED

"A" DIMENSIONS WITH 2.25" STAND	
WITH 36T ALUMINUM PULLEY (SHOWN)	5.09
WITH 24T ALUMINUM PULLEY	5.09
WITH 24T COMPOSITE PULLEY	5.37
WITH 36T COMPOSITE PULLEY	5.37
WITH 40T COMPOSITE PULLEY	5.37

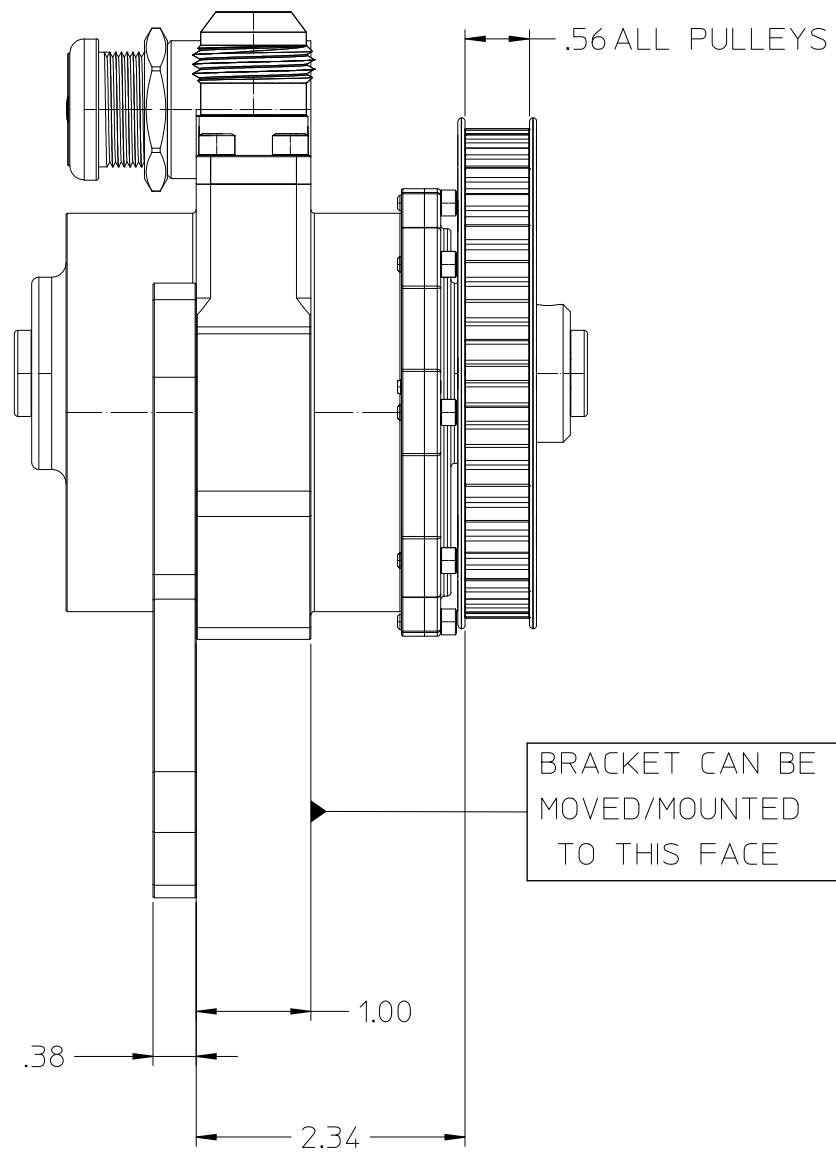
"A" DIMENSIONS WITH 1.75" MINIMUM LENGTH STAND	
WITH 36T ALUMINUM PULLEY (SHOWN)	4.59
WITH 24T ALUMINUM PULLEY	4.59
WITH 24T COMPOSITE PULLEY	4.87
WITH 36T COMPOSITE PULLEY	4.87
WITH 40T COMPOSITE PULLEY	4.87

2		
1		
0		
REV.	REVISION DESCRIPTION	DATE
	DESCRIPTION LAYOUT DIMENSIONS, GEN2 STANDARD PUMP	
	HEAT TREATING	MATERIAL
	HARDNESS	DEPTH
	SURFACE PREPARATION	DESIGNED BY T HIGDON
	FINISH	SCALE SHEET SIZE
		1 OF 1 B
		DRAWING NO. STR.03.01.000

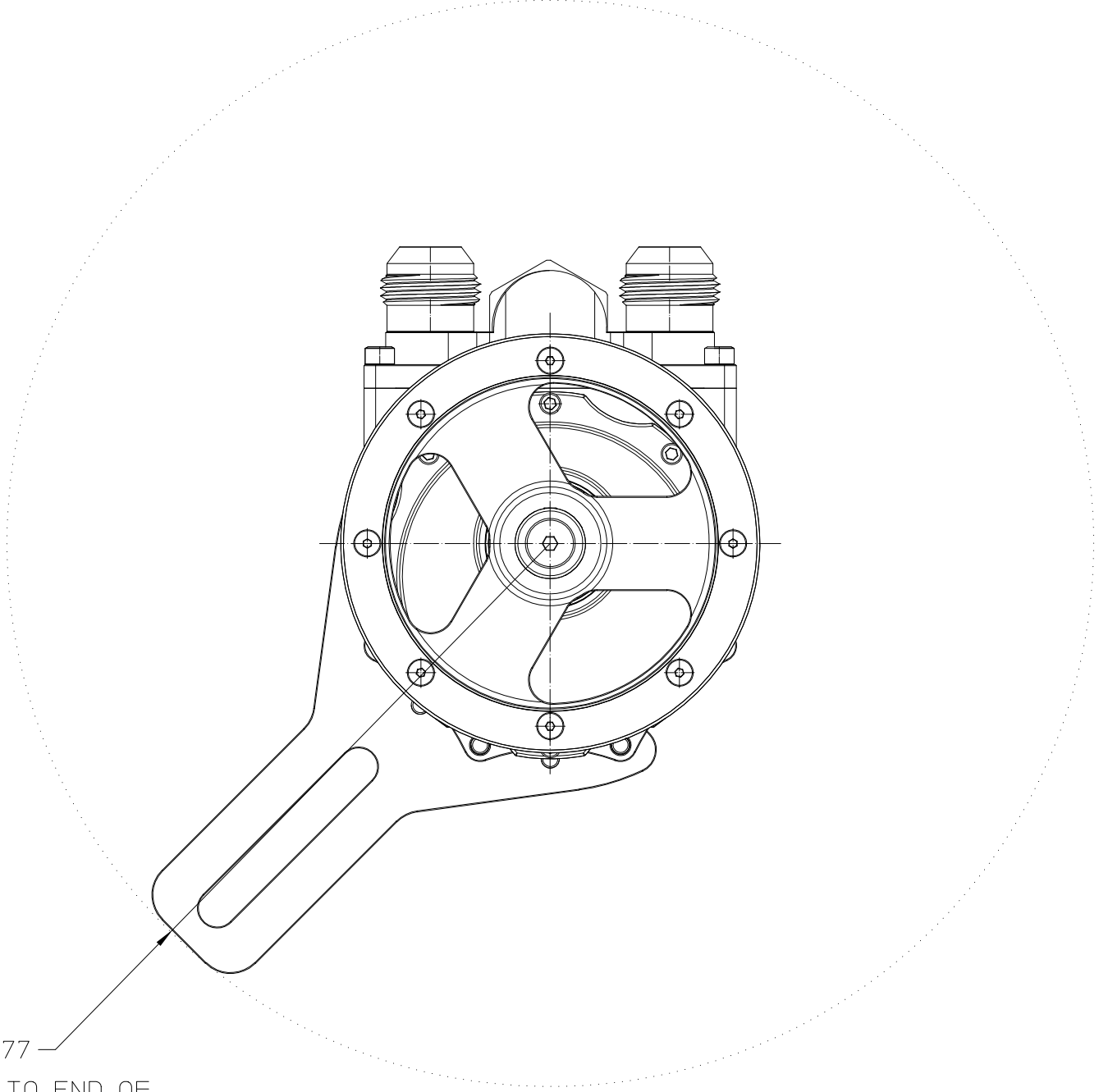
**star machine**  
 6018 Blackhead Road  
 Baltimore, MD. 21220

GEOMETRIC (INCHES)  
 0.05--10 ± 0.005 0.05--20 0.005  
 11--20 ± 0.010 21--40 0.010  
 21--30 ± 0.015 41--50 0.015  
 31--40 ± 0.020 51--100 0.020  
 44--50 ± 0.030 101--150 0.030  
 51--100 ± 0.050 151--200 0.050

THIS DRAWING IS THE PROPERTY OF STAR MACHINE.  
 IT SHALL NOT BE DISCLOSED OR COPIED WITHOUT  
 THE WRITTEN AUTHORIZATION OF STAR MACHINE.



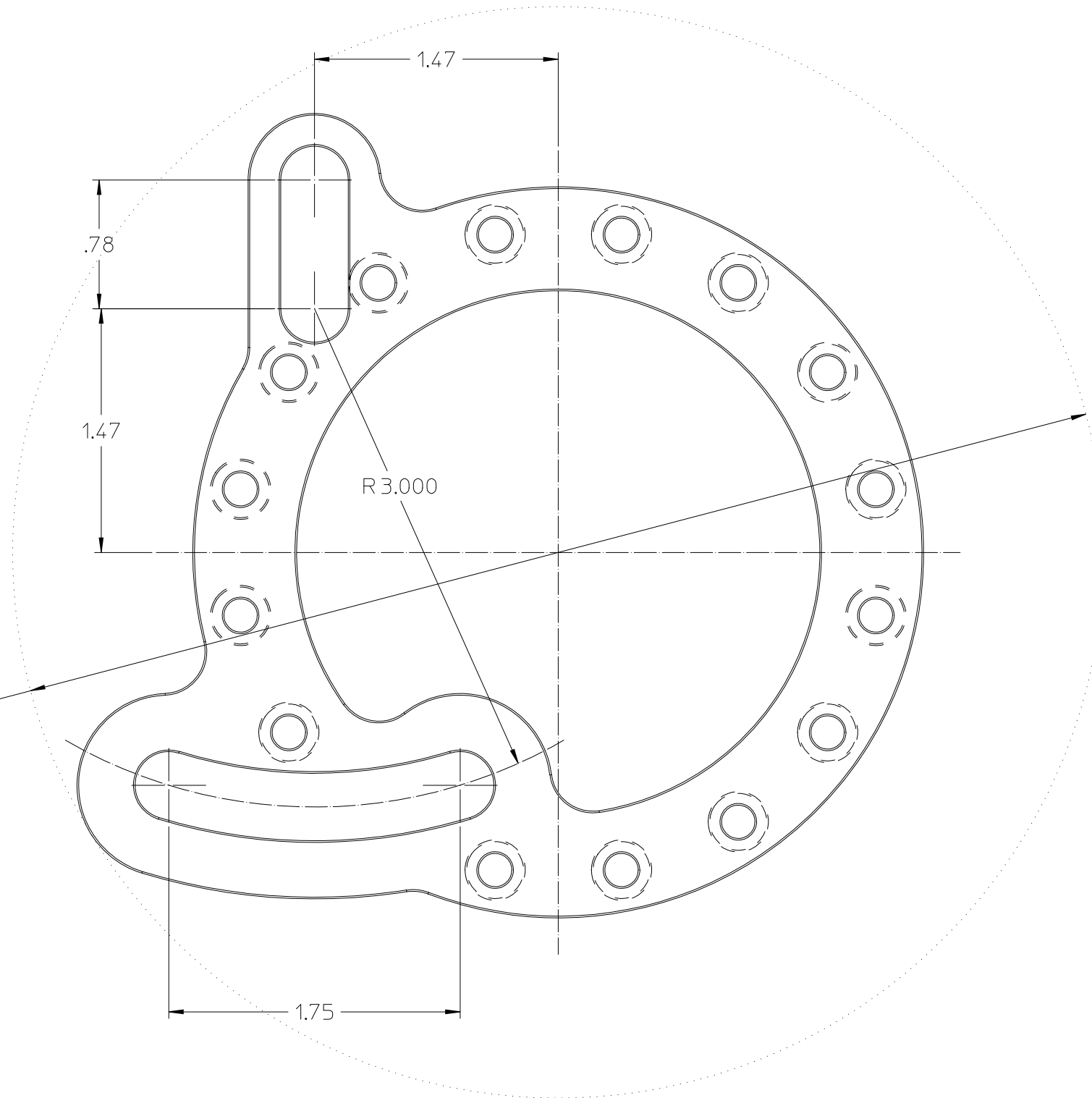
5.77  
 DIMENSION TO END OF  
 BRACKET AS IT IS ROTATED  
 ABOUT PUMP CENTER  
 (BRACKET CAN BE  
 ROTATED/FASTENED  
 EVERY 22.5°)



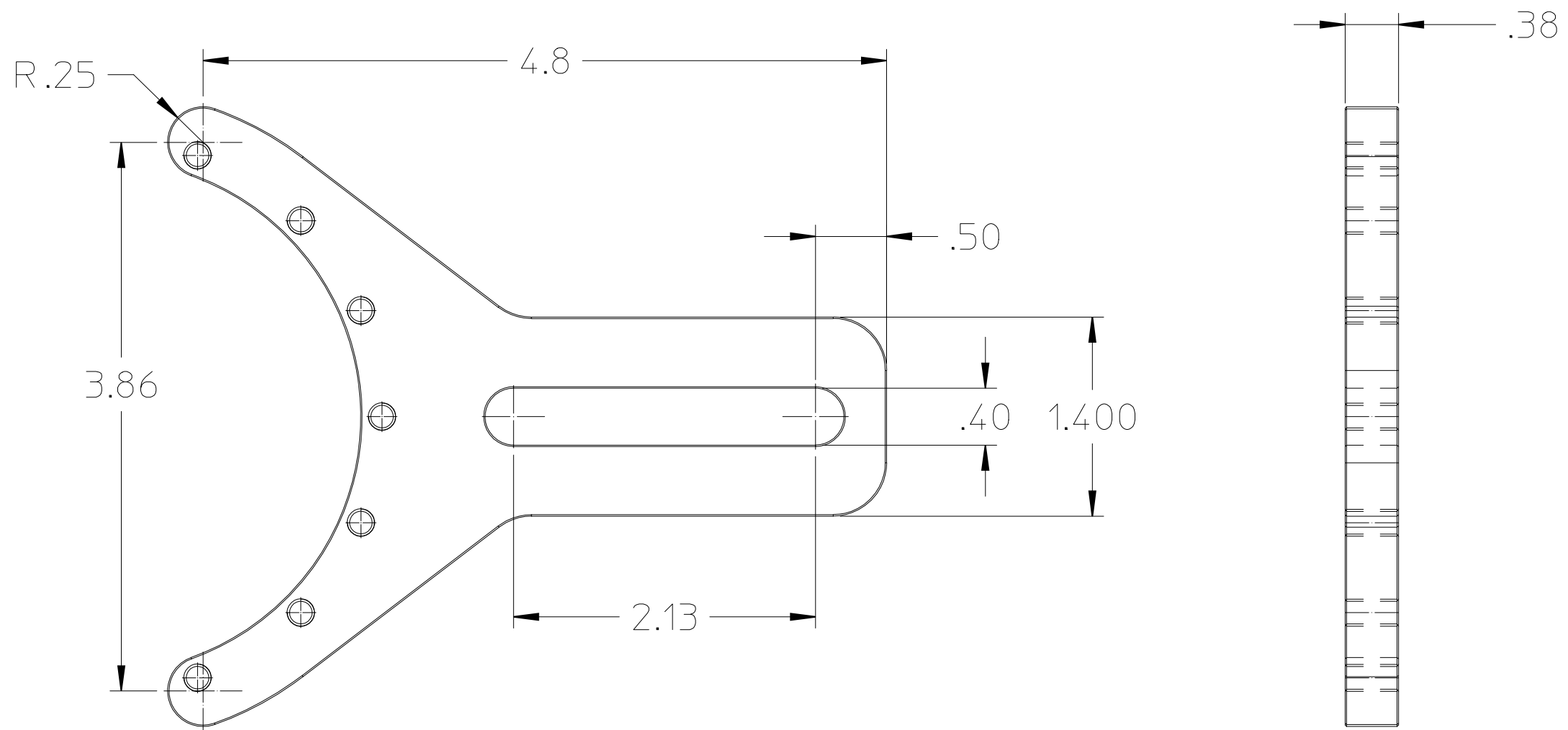
"A" DIMENSIONS WITH 2.25" STAND	
WITH 36T ALUMINUM PULLEY (SHOWN)	2.34
WITH 24T ALUMINUM PULLEY	2.34
WITH 24T COMPOSITE PULLEY	2.62
WITH 36T COMPOSITE PULLEY	2.62
WITH 40T COMPOSITE PULLEY	2.62

2		
1		
0		
REV.	REVISION DESCRIPTION	DATE
<i>star machine</i> 6018 Blackhead Road Baltimore, MD. 21220		
DESCRIPTION		LAYOUT DIMENSIONS, GEN2 PUMP WITH RED BRKT.
HEAT TREATING		MATERIAL
HARDNESS		DEPTH
SURFACE PREPARATION		DESIGNED BY T HIGDON
FINISH		SCALE SHEET SIZE 1 OF 1 B
TOLERANCES (UNLESS SPECIFIED) LINEAR (INCHES) 0.05--10 ± 0.005 11--20 ± 0.010 21--30 ± 0.015 31--40 ± 0.020 44--50 ± 0.030 51--100 ± 0.050 ANGULAR 0-90 ± 0.25° 91-180 ± 0.50° 181-270 ± 0.75° 271-360 ± 1.00° GEOMETRIC (INCHES) 0.05--10 ± 0.005 11--20 ± 0.010 21--30 ± 0.015 31--40 ± 0.020 44--50 ± 0.030 51--100 ± 0.050 BREAK ALL EDGES (UNLESS SPECIFIED)		THIS DRAWING IS THE PROPERTY OF STAR MACHINE. IT SHALL NOT BE DISCLOSED OR COPIED WITHOUT THE WRITTEN AUTHORIZATION OF STAR MACHINE.

Ø 6.6  
OVERALL SPACE REQUIREMENT  
FOR "Q" BRACKET



2		
1		
0		
REV.	REVISION DESCRIPTION	DATE
<i>star machine</i> 6018 Blackhead Road Baltimore, MD. 21220		DESCRIPTION "Q" BRACKET LAYOUT DIMENSIONS HEAT TREATING MATERIAL HARDNESS DEPTH DESIGNED BY T HIGDON SURFACE PREPARATION SCALE SHEET SIZE 2 OF 2 B DRAWING NO.
TOLERANCES (INCHES) FRACTIONS DECIMALS 0.05--10 ± 0.005 11--20 ± 0.010 21--30 ± 0.015 31--40 ± 0.020 44--50 ± 0.030 51--100 ± 0.050		GEOMETRIC (INCHES) 0.05--20 0.005 21--40 0.010 41--50 0.015 51--100 0.020 0.002 0-100 0.015
BREAK ALL EDGES (INCHES SPECIFIED)		FINISH THIS DRAWING IS THE PROPERTY OF STAR MACHINE. IT SHALL NOT BE DISCLOSED OR COPIED WITHOUT THE WRITTEN AUTHORIZATION OF STAR MACHINE.



2				
1				
0				
REV.	REVISION DESCRIPTION			DATE
<i>star machine</i> 6618 Blackhead Road Baltimore, MD. 21220		DESCRIPTION RED MOUNTING BRACKET		
		HEAT TREATING	MATERIAL	
		HARDNESS	DEPTH	DESIGNED BY T HIGDON
		SURFACE PREPARATION		SCALE
		FINISH		SHEET 1 OF 1
				SIZE B
				DRAWING NO.
TOLERANCES UNLESS SPECIFIED LINEAR (INCHES) 0-.05 ± 0.005 .05-.10 ± 0.010 .10-.20 ± 0.015 .20-.30 ± 0.020 .30-.40 ± 0.030 .40-.50 ± 0.030 .50-1.00 ± 0.050 ANGULAR 0-90 ± 0.25° 91-180 ± 0.50° 181-270 ± 0.75° 271-360 ± 1.00° GEOMETRIC (INCHES) 0.05-10 ± 0.005 11-20 ± 0.010 21-30 ± 0.015 31-40 ± 0.020 44-50 ± 0.030 51-100 ± 0.050 0.002 0-100 0.015		BREAK ALL EDGES UNLESS SPECIFIED THIS DRAWING IS THE PROPERTY OF STAR MACHINE. IT SHALL NOT BE DISCLOSED OR COPIED WITHOUT THE WRITTEN AUTHORIZATION OF STAR MACHINE.		