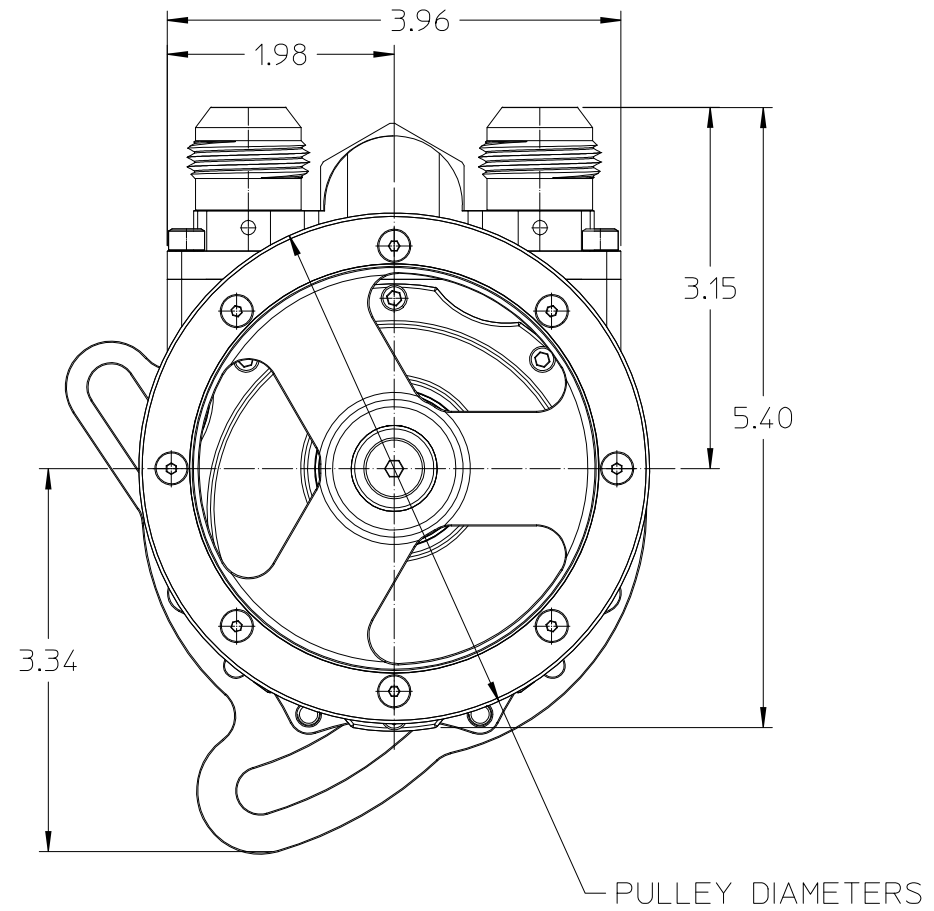
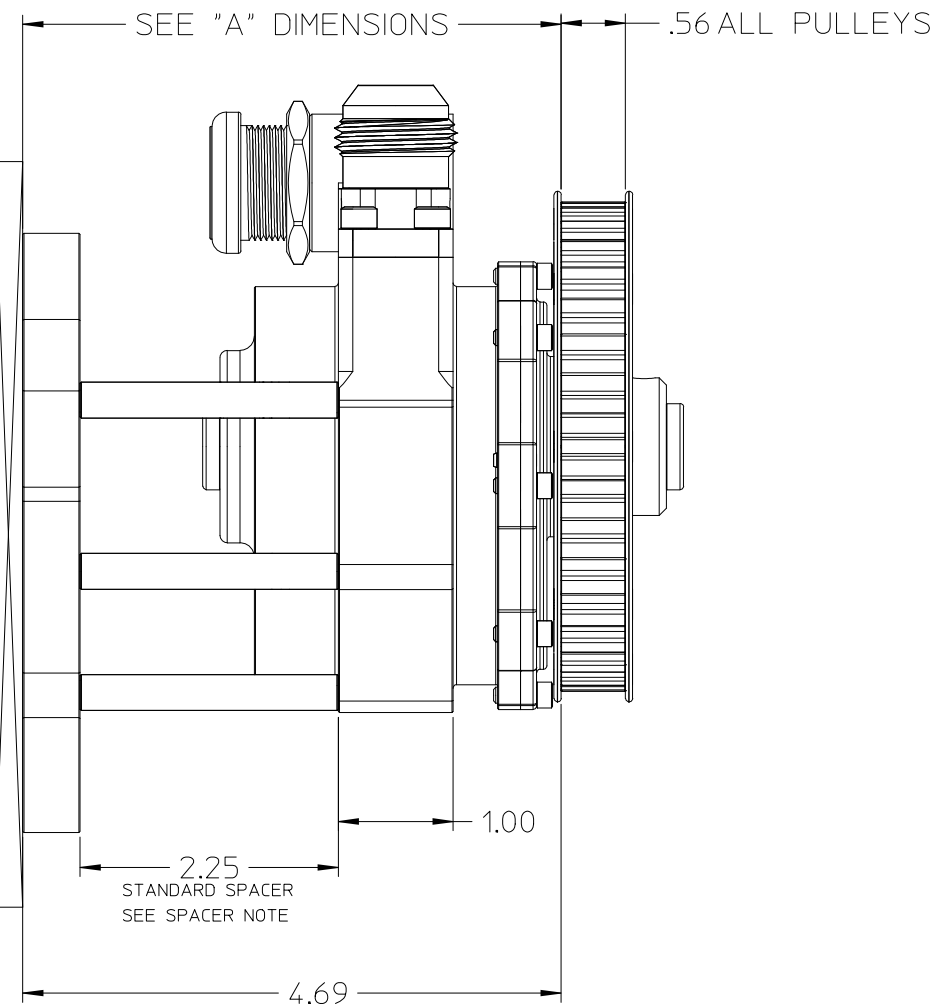


FRONT ENGINE  
PLATE



PULLEY DIAMETERS	
36T ALUMINUM (SHOWN)	Ø4.45
24T ALUMINUM	Ø3.00
24T COMPOSITE	Ø3.12
36T COMPOSITE	Ø4.53
40T COMPOSITE	Ø5.00

**STAND LENGTH NOTES**  
 THE STANDARD LENGTH IS 2.25"  
 STANDS AVAILABLE IN 0.25" INCREMENTS  
 THE MINIMUM LENGTH IS 1.37"  
 THE MAXIMUM LENGTH IS 3.50"  
 CUSTOM LENGTHS AVAILABLE IF REQUIRED

"A" DIMENSIONS WITH 2.25" STAND	
WITH 36T ALUMINUM PULLEY (SHOWN)	4.69
WITH 24T ALUMINUM PULLEY	4.69
WITH 24T COMPOSITE PULLEY	4.41
WITH 36T COMPOSITE PULLEY	4.41
WITH 40T COMPOSITE PULLEY	4.41

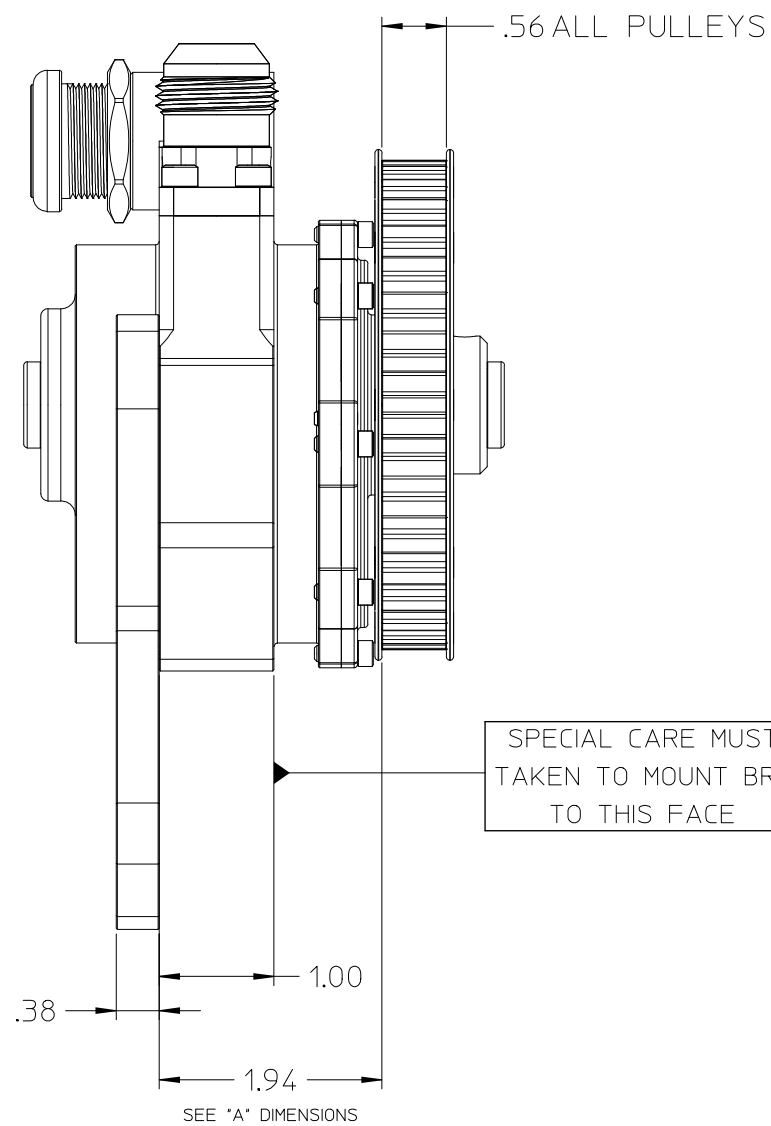
"A" DIMENSIONS WITH 1.37" MINIMUM LENGTH STAND	
WITH 36T ALUMINUM PULLEY (SHOWN)	3.81
WITH 24T ALUMINUM PULLEY	3.81
WITH 24T COMPOSITE PULLEY	3.53
WITH 36T COMPOSITE PULLEY	3.53
WITH 40T COMPOSITE PULLEY	3.53

2		
1		
0		
REV.	REVISION DESCRIPTION	DATE
	DESCRIPTION MINI PUMP LAYOUT DIMENSIONS, GEN2	
	HEAT TREATING	MATERIAL
	HARDNESS	DEPTH
	SURFACE PREPARATION	DESIGNED BY T HIGDON
	FINISH	SCALE SHEET SIZE 1 OF 1 B
		DRAWING NO. STR.09.04.000

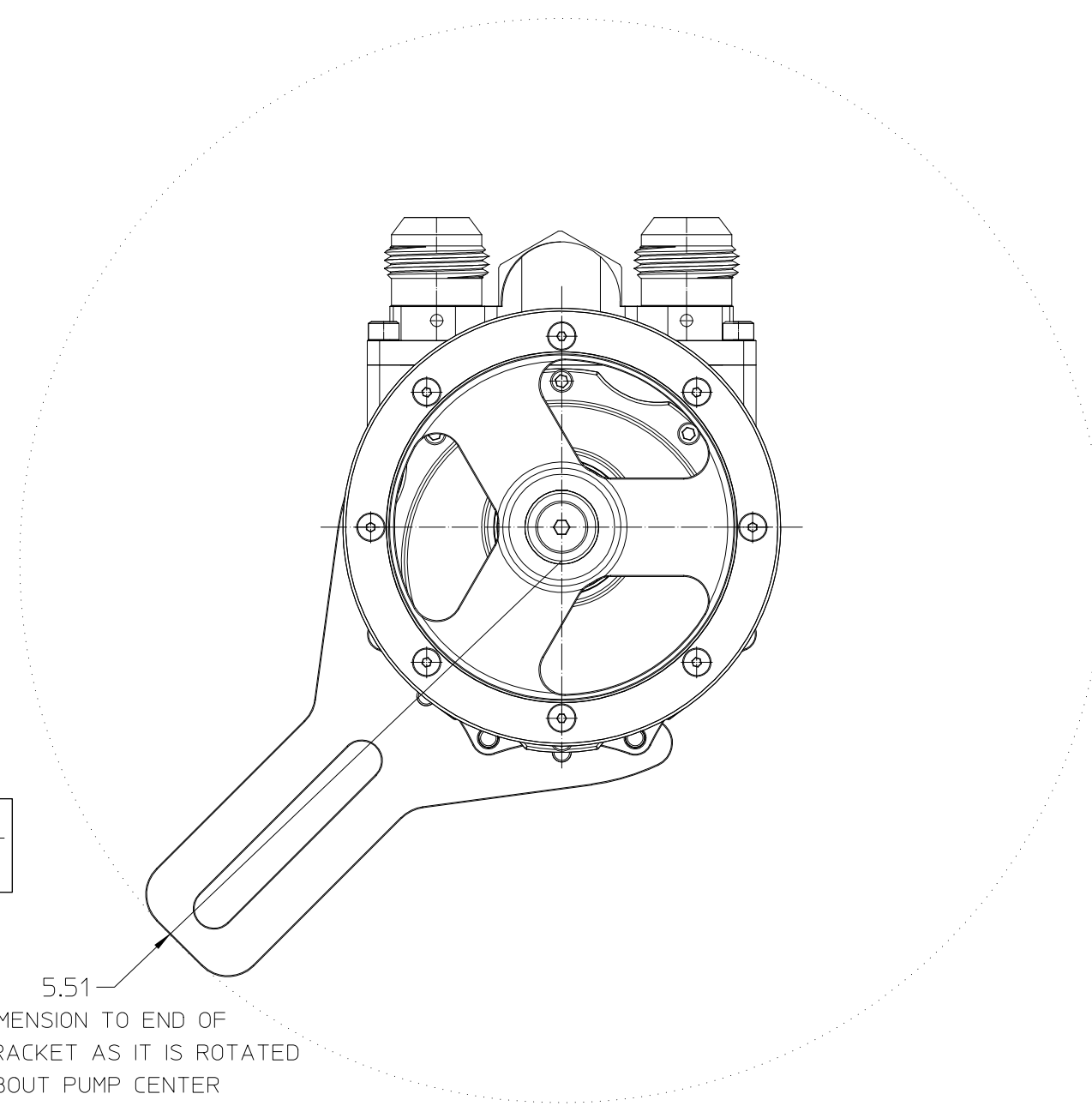
*star machine*  
 6018 Blackhead Road  
 Baltimore, MD. 21220

THIS DRAWING IS THE PROPERTY OF STAR MACHINE. IT SHALL NOT BE DISCLOSED OR COPIED WITHOUT THE WRITTEN AUTHORIZATION OF STAR MACHINE.

TOLERANCES UNLESS SPECIFIED	LINEAR (INCHES)		ANGULAR	
	0.05--10	+ 0.005	0.05--20	0.005
11--20	+ 0.010	21--40	0.010	
21--30	+ 0.015	41--50	0.015	
31--40	+ 0.020	51--100	0.020	
41--50	+ 0.025			
51--100	+ 0.050			



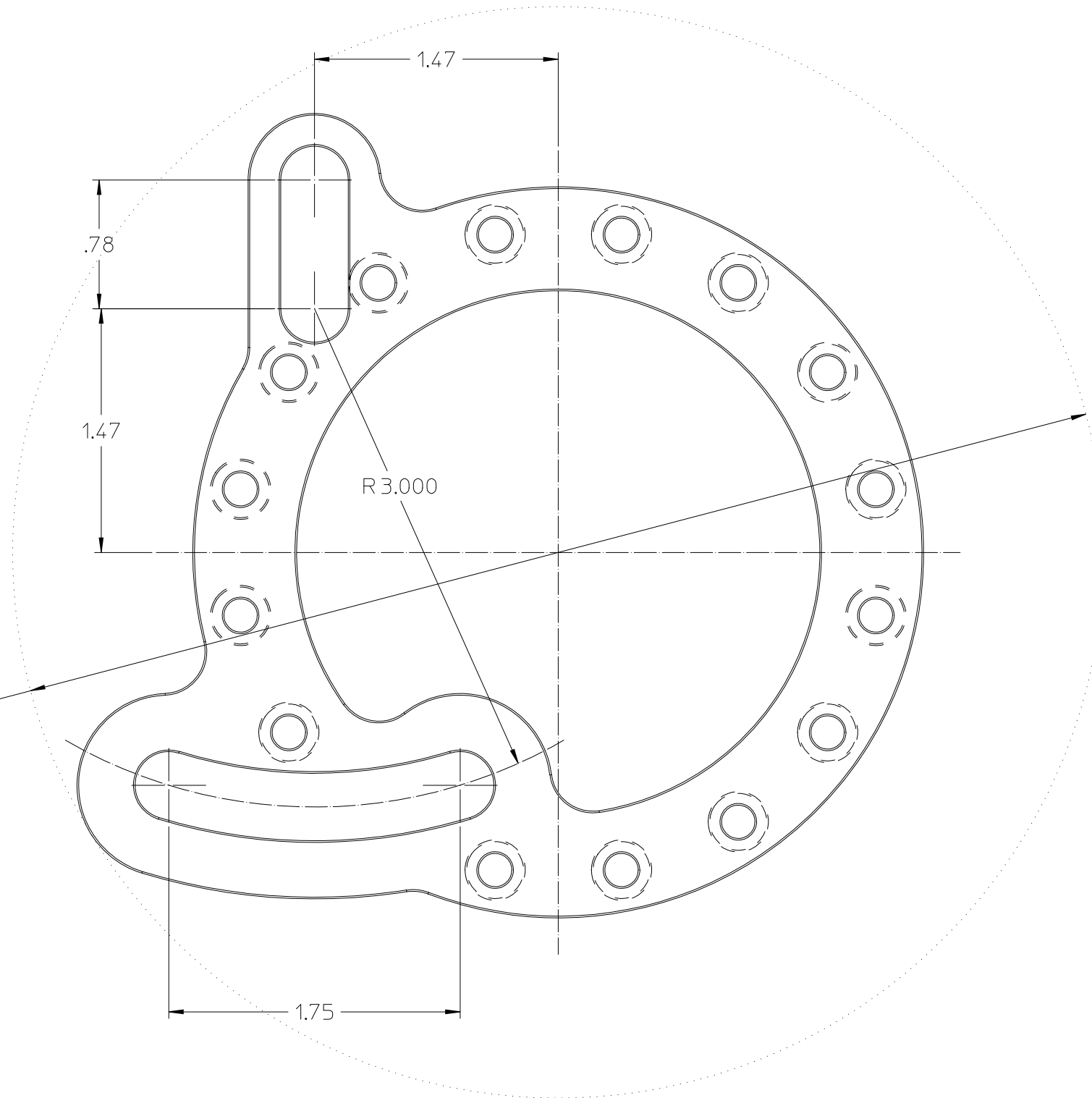
5.51  
 DIMENSION TO END OF BRACKET AS IT IS ROTATED ABOUT PUMP CENTER BRACKET CAN BE ROTATED/FASTENED EVERY 22.5°)



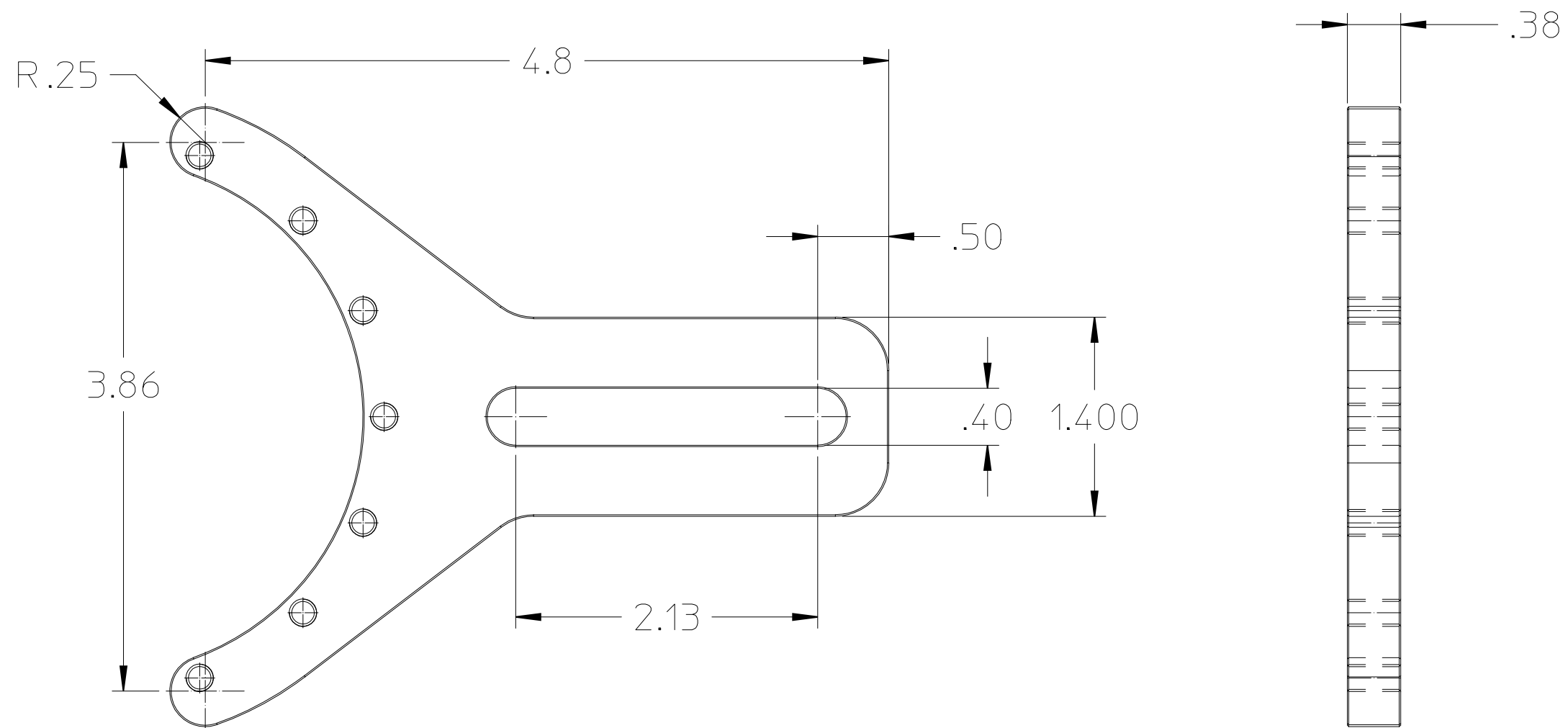
"A" DIMENSIONS WITH RED BRACKET	
WITH 36T ALUMINUM PULLEY (SHOWN)	4.59
WITH 24T ALUMINUM PULLEY	4.59
WITH 24T COMPOSITE PULLEY	4.31
WITH 36T COMPOSITE PULLEY	4.31
WITH 40T COMPOSITE PULLEY	4.31

2																														
1																														
0																														
REV.	REVISION DESCRIPTION	DATE																												
	DESCRIPTION LAY OUT DIMENSIONS, MINI PUMP WITH RED BRACKET																													
HEAT TREATING		MATERIAL																												
HARDNESS		DEPTH																												
SURFACE PREPARATION		SCALE SHEET SIZE																												
FINISH		DRAWING NO.																												
<p>star machine          6018 Blackhead Road          Baltimore, MD. 21220</p>																														
<table border="1"> <thead> <tr> <th colspan="2">LINEAR (INCHES)</th> <th colspan="2">ANGULAR</th> </tr> </thead> <tbody> <tr> <td>0-.05</td> <td>+0.005</td> <td>0-90</td> <td>+0.25°</td> </tr> <tr> <td>.11--20</td> <td>+0.010</td> <td>91-180</td> <td>+0.50°</td> </tr> <tr> <td>21--30</td> <td>+0.015</td> <td>181-270</td> <td>+0.75°</td> </tr> <tr> <td>31--40</td> <td>+0.020</td> <td>271-360</td> <td>+1.00°</td> </tr> <tr> <td>44--50</td> <td>+0.030</td> <td></td> <td></td> </tr> <tr> <td>51--100</td> <td>+0.050</td> <td></td> <td></td> </tr> </tbody> </table>		LINEAR (INCHES)		ANGULAR		0-.05	+0.005	0-90	+0.25°	.11--20	+0.010	91-180	+0.50°	21--30	+0.015	181-270	+0.75°	31--40	+0.020	271-360	+1.00°	44--50	+0.030			51--100	+0.050			
LINEAR (INCHES)		ANGULAR																												
0-.05	+0.005	0-90	+0.25°																											
.11--20	+0.010	91-180	+0.50°																											
21--30	+0.015	181-270	+0.75°																											
31--40	+0.020	271-360	+1.00°																											
44--50	+0.030																													
51--100	+0.050																													
<table border="1"> <thead> <tr> <th colspan="2">GEOMETRIC (INCHES)</th> </tr> </thead> <tbody> <tr> <td>0.05-10</td> <td>+0.005</td> </tr> <tr> <td>11--20</td> <td>+0.010</td> </tr> <tr> <td>21--30</td> <td>+0.015</td> </tr> <tr> <td>31--40</td> <td>+0.020</td> </tr> <tr> <td>44--50</td> <td>+0.030</td> </tr> <tr> <td>51--100</td> <td>+0.050</td> </tr> </tbody> </table>		GEOMETRIC (INCHES)		0.05-10	+0.005	11--20	+0.010	21--30	+0.015	31--40	+0.020	44--50	+0.030	51--100	+0.050															
GEOMETRIC (INCHES)																														
0.05-10	+0.005																													
11--20	+0.010																													
21--30	+0.015																													
31--40	+0.020																													
44--50	+0.030																													
51--100	+0.050																													
THIS DRAWING IS THE PROPERTY OF STAR MACHINE. IT SHALL NOT BE DISCLOSED OR COPIED WITHOUT THE WRITTEN AUTHORIZATION OF STAR MACHINE.																														

Ø 6.6  
OVERALL SPACE REQUIREMENT  
FOR "Q" BRACKET



2		
1		
0		
REV.	REVISION DESCRIPTION	DATE
<i>star machine</i> 6018 Blackhead Road Baltimore, MD. 21220		DESCRIPTION "Q" BRACKET LAYOUT DIMENSIONS HEAT TREATING MATERIAL HARDNESS DEPTH DESIGNED BY T HIGDON SURFACE PREPARATION SCALE SHEET SIZE 2 OF 2 B DRAWING NO.
TOLERANCES UNLESS SPECIFIED: LINEAR (INCHES) 0.05--10 ± 0.005 11--20 ± 0.010 21--30 ± 0.015 31--40 ± 0.020 44--50 ± 0.030 51--100 ± 0.050 ANGULAR 0-90 ± 0.25° 91-180 ± 0.50° 181-270 ± 0.75° 271-360 ± 1.00°		FINISH BREAK ALL EDGES UNLESS SPECIFIED THIS DRAWING IS THE PROPERTY OF STAR MACHINE. IT SHALL NOT BE DISCLOSED OR COPIED WITHOUT THE WRITTEN AUTHORIZATION OF STAR MACHINE.



2			
1			
0			
REV.	REVISION DESCRIPTION	DATE	
<i>star machine</i> 6618 Blackhead Road Baltimore, MD. 21220		DESCRIPTION RED MOUNTING BRACKET	
		HEAT TREATING	MATERIAL
		HARDNESS	DEPTH
		DESIGNED BY T HIGDON	
		SURFACE PREPARATION	SCALE
		SHEET 1 OF 1	
		SIZE B	
		DRAWING NO.	
TOLERANCES UNLESS SPECIFIED LINEAR (INCHES) 0-.05 ± 0.005 .05-.10 ± 0.010 .10-.20 ± 0.015 .20-.30 ± 0.020 .30-.40 ± 0.030 .40-.50 ± 0.030 .50-1.00 ± 0.050 ANGULAR 0-90 ± 0.25° 91-180 ± 0.50° 181-270 ± 0.75° 271-360 ± 1.00° GEOMETRIC (INCHES) 0-.05 ± 0.005 .05-.10 ± 0.010 .10-.20 ± 0.015 .20-.30 ± 0.020 .30-.40 ± 0.030 .40-.50 ± 0.030 .50-1.00 ± 0.050 0.002 0-100 0.015		BREAK ALL EDGES UNLESS SPECIFIED THIS DRAWING IS THE PROPERTY OF STAR MACHINE. IT SHALL NOT BE DISCLOSED OR COPIED WITHOUT THE WRITTEN AUTHORIZATION OF STAR MACHINE.	