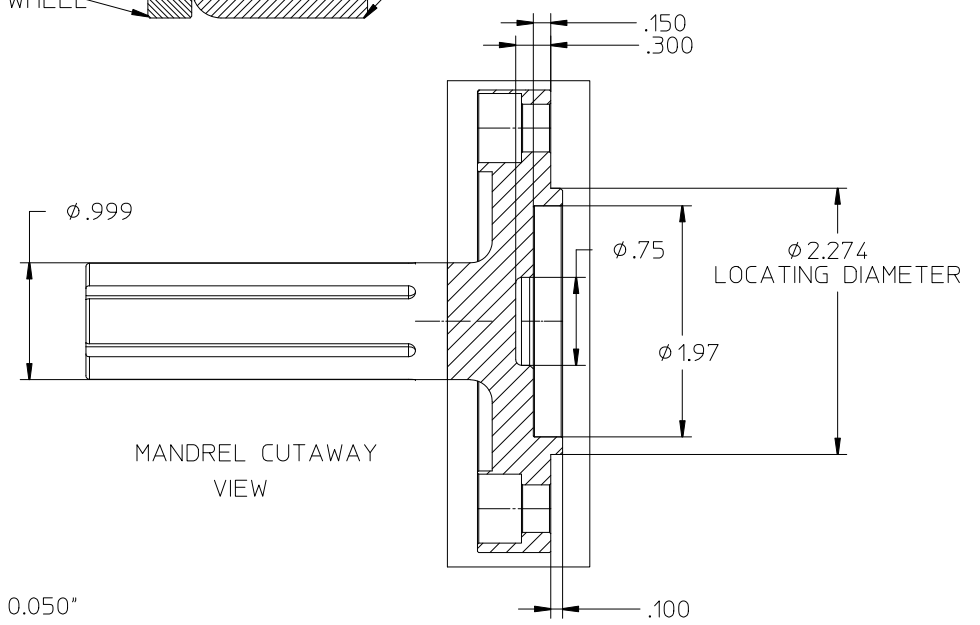
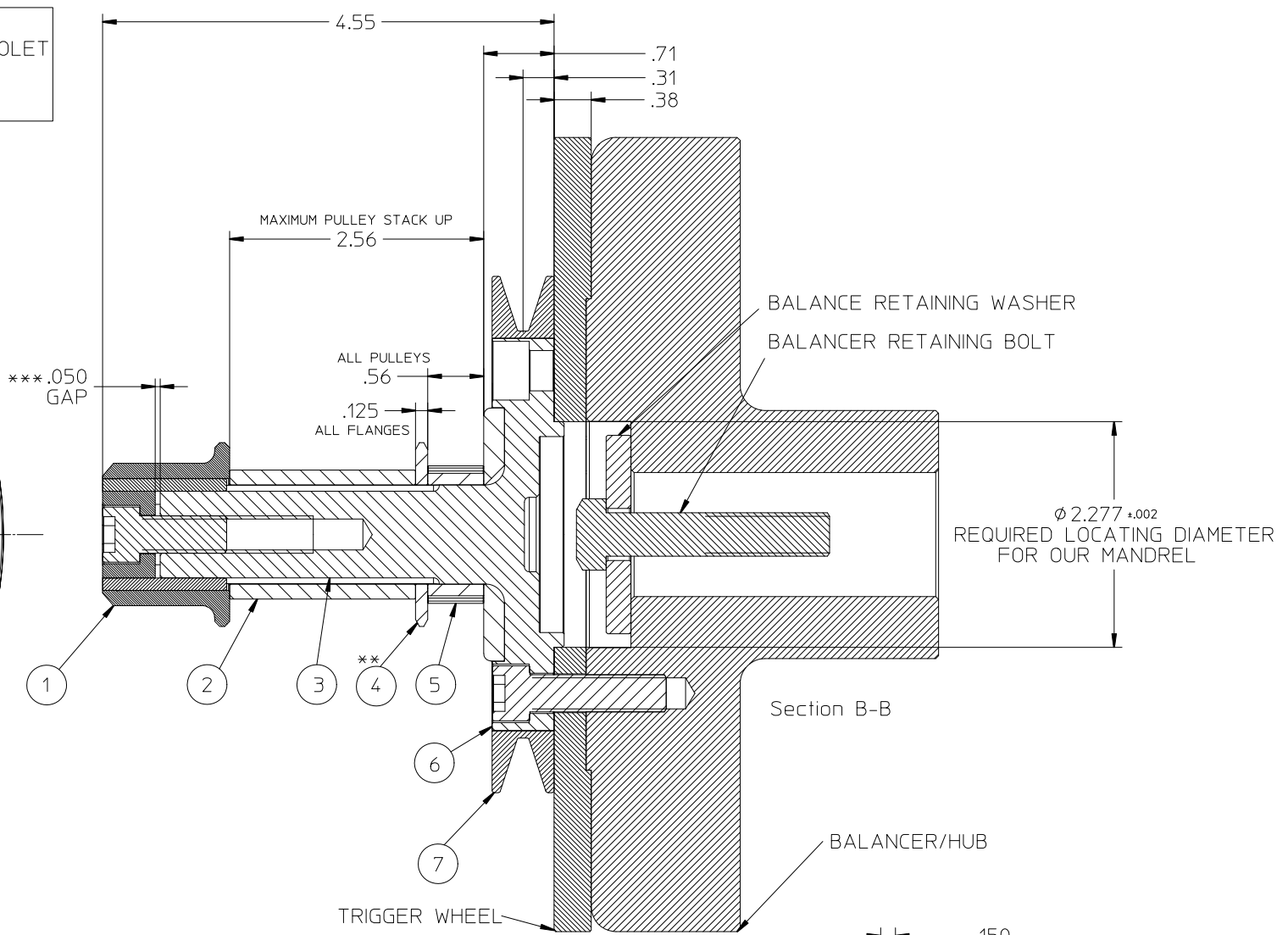


MOUNTING BOLT PATTERN:
 3 BOLTS ON Ø3.2 - CHEVROLET
 3 BOLTS ON Ø3.3 - FORD
 4 BOLTS ON Ø3.3 - FORD



DETAIL	PART NUMBER	DESCRIPTION
1	STR.04.07.003	DRIVE NUT (1.25" ACROSS FLATS)
2	STR.04.07.006	SPACER (1.875" LONG)
3	STR.04.07.008	KEY DRIVE 0.125" SQUARE X 2.35" LONG
4	STR.04.07.004	FLANGE - BELT GUIDE Ø1.85" FOR 12 & 14 TOOTH PULLEYS
4	STR.04.07.005	FLANGE - BELT GUIDE Ø2.3" FOR 16 & 18 TOOTH PULLEYS
5	STR.99.09.012	DRIVE PULLEY (12 TOOTH)
5	STR.99.09.014	DRIVE PULLEY (14 TOOTH)
5	STR.99.09.016	DRIVE PULLEY (16 TOOTH)
5	STR.99.09.018	DRIVE PULLEY (18 TOOTH)
6	STR.18.12.030	MANDREL
7	STR.18.12.031	V PULLEY (Ø5.2")

*** MAINTAIN GAP, BETWEEN 0.025" AND 0.050" WHEN MAKING CHANGES TO THE MANDREL. THIS ALLOWS THE DRIVE NUT TO CLAMP THE ASSEMBLY TOGETHER.

** TO PREVENT BELT LOSS ALWAYS USE A FLANGE ON BOTH SIDES OF ALL PULLEYS

* WHEN ALL MODIFICATIONS ARE COMPLETE APPLY MEDIUM/REMOVABLE STRENGTH THREAD LOCKER TO ALL FASTENERS

2			
1			
0			
REV.	DESCRIPTION	DATE	
STAR MACHINE			
7810 OAK AVENUE PARKVILLE, MD. 21234			
HEAT TREATING		MATERIAL	
HARDNESS		DEPTH	
SURFACE PREPARATION		DESIGNED BY T HIGDON	
FINISH		SCALE	SHEET 1 OF 1
		SIZE C	
		DRAWING NO.	
		STR.18.05.000	